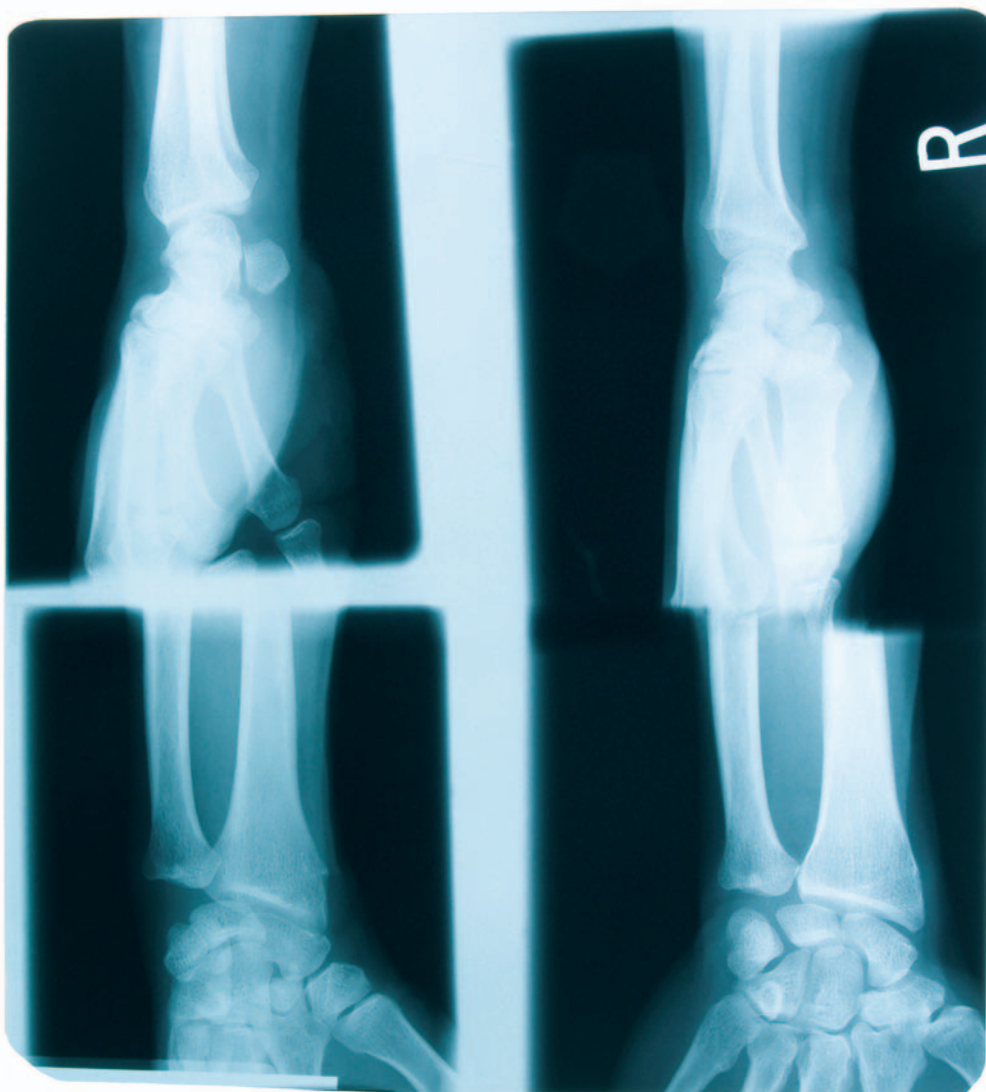


Personal Injury



**ATHERTON
GODFREY**
s o l i c i t o r s



All the support you need



**ATHERTON
GODFREY**
solicitors

Good legal support makes a real difference following an accident or injury.



Association of Personal Injury Lawyers Accredited Firm



Law Society Personal Injury Panel



Law Society Clinical Negligence Panel

Members of Headway -
The Brain Injury Association
Personal Injury Solicitors List

Spinal Injury Association
Solicitors List

Atherton Godfrey's Personal Injury Team is there to offer all the legal support you need following accident or injury.

We will offer immediate advice, agree with you what action is necessary and then take that action as soon as possible.

We are able to pursue many types of claim on a "no win-no fee" basis which removes the uncertainties and worries there might otherwise be about costs.

Our aim is to provide personal and understanding support whilst, at the same time, firmly pursuing the claim to recover full compensation at the earliest opportunity.

1. You may be able to make a claim if you have been injured:

- In a road accident
- In an accident at work
- Through ill health resulting from work
- By tripping or slipping
- In an accident at home, visiting shops or other places
- On holiday or travelling abroad
- As a result of dangerous or defective goods or services
- As a result of assault or a criminal act
- Through medical treatment
- Through dental treatment

In the last 3 years (though children may commence a claim any time up to the age of 21).

2. You may be able to claim for:

- The pain and suffering caused by the injuries
- Loss of earnings
- Damage to property
- The value of care
- Travel expenses
- Prescription charges
- Other expenses resulting from the injuries

We will try to tell you, as soon as we can, how much compensation we think you should get and we will always negotiate firmly and fairly to get the most we can.

3. Who should I claim against?

The claim will be made against the party responsible for the injuries. They will usually be insured, and it will be the insurer who has to deal with and pay the claim.

4. How long will it take?

If you are lucky enough to make a quick recovery from your injuries we may be able to conclude the case in a few months. If the injuries are more serious the case will take longer as it is important, before the claim is concluded, to make sure you will not get any worse.

While we will try to deal with the claim as quickly as possible we never compromise on the action necessary to ensure you receive proper compensation.

5. How much will it cost?

Your first interview is absolutely free and, if your injuries make it difficult for you to come to our offices, we will visit you at home or in hospital.

At the first interview we will discuss the options for funding the claim such as:

- Any legal expenses insurance you may have
- What proceeding on a "no win-no fee" basis would mean
- Whether any other funding is available

This will let you decide which, of the options available, you would prefer.

6. What else can I do?

You may be entitled to state benefits, to provide for any immediate financial assistance. The Department of Work and Pensions will be able to confirm.

You should keep a record of all expenses incurred as a result of the injuries with details of the amount involved, the date and the nature of the expense.

You should keep any documents relating to the injuries or the expenses incurred as a result as these may need to be produced later to support the claim.

7. Why should I instruct Atherton Godfrey?

We have a large team of experienced practitioners. You can be sure of getting the best advice.

Our expertise is confirmed by membership of the Law Society, Headway and the Spinal Injuries Association panels.

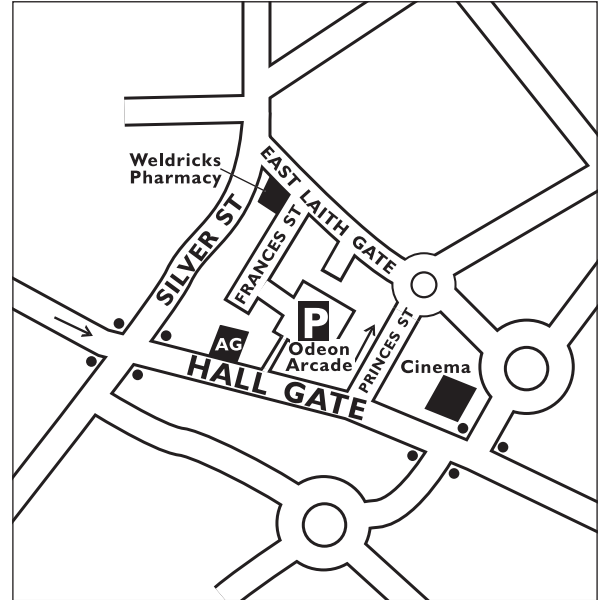
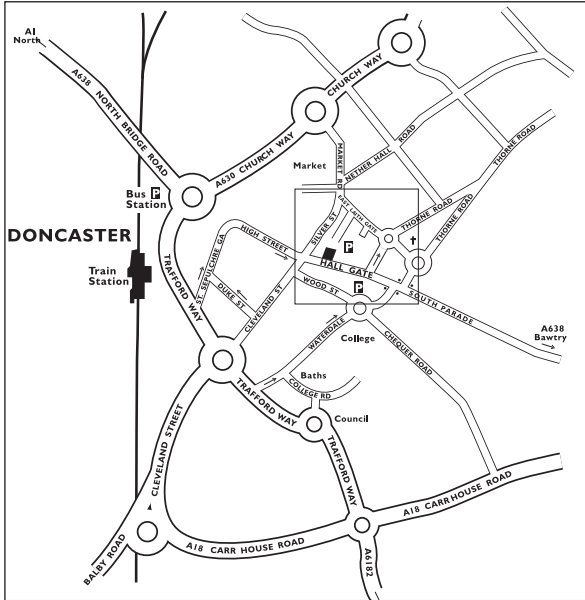
We are based locally and aim to offer a friendly, face to face, expert service.

We have easy access from the street to ground floor interview rooms.

Your claim will be dealt with professionally but personally.

Telephone 01302 320621

www.athertongodfrey.co.uk



Directions

From Bawtry (A638) - at the "Racecourse Roundabout," go straight ahead (second exit) for Town Centre. 3/4 of a mile to traffic lights - go straight ahead. Atherton Godfrey approx 200 metres on right. To NCP car park, turn right at lights after Atherton Godfrey, sharp right at the next set of lights onto East Laith Gate and then first right on to Frances Street (Weldricks Pharmacy on corner).

From A1 North - take A638 to Doncaster. After approximately 3 miles, pass Morrison's supermarket on the left, head towards traffic lights and get in the 3rd lane. Heading towards town centre take second left. Go over the bridge and get in the third lane sign posted Scunthorpe A630/A18 (second left). Take an immediate right through the traffic lights onto Market Road. At the next traffic lights go straight ahead up Silver Street and turn left at the next traffic lights on to Hall Gate. Atherton Godfrey is approximately 50 metres on the left. To NCP car park continue up Hall Gate, past Atherton Godfrey, take the first left along Princes Street. At mini roundabout turn left down East Laith Gate and then second left onto Frances Street (Weldrick's Pharmacy on corner).

From M18 - Leave M18 at Junction 3 and follow A6182 to Doncaster (3 miles). At "Sidings Roundabout" (after St. Leger Homes on left) follow signs for Wakefield A638/Town Centre (second exit) to mini roundabout. Take second exit, going past "The Council House." Follow sign for Waterdale, turning right on to Waterdale. Continue along Waterdale, go straight ahead at mini roundabout and at traffic lights almost immediately afterwards turn left onto Hall Gate. Atherton Godfrey is 200 metres on the right. To NCP car park, turn right at lights after Atherton Godfrey, sharp right at the next set of traffic lights onto East Laith Gate and then first right on to Frances Street (Weldrick's Pharmacy on corner).

Atherton Godfrey provides all the support you need on legal matters

- Commercial law • Clinical negligence
- Employment law • Family law • Family mediation
- Personal injury • Residential property



**ATHERTON
GODFREY**
solicitors

8 Hall Gate, Doncaster, DN1 3LU
Tel: 01302 320621
www.athertongodfrey.co.uk